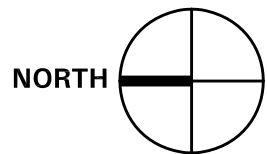


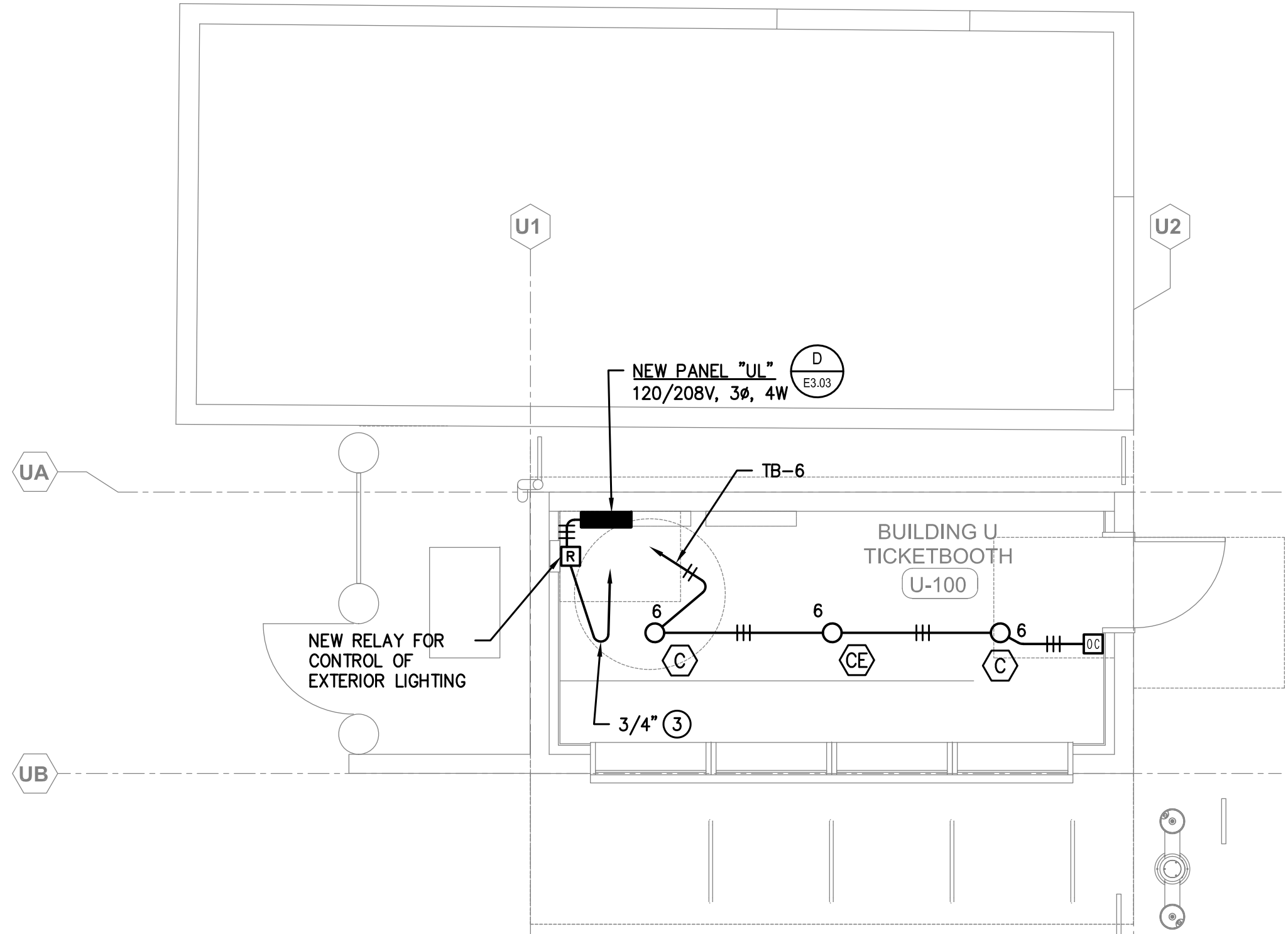
TICKET BOOTH FLOOR PLAN - SIGNAL

SCALE: 1/4" = 1'-0"



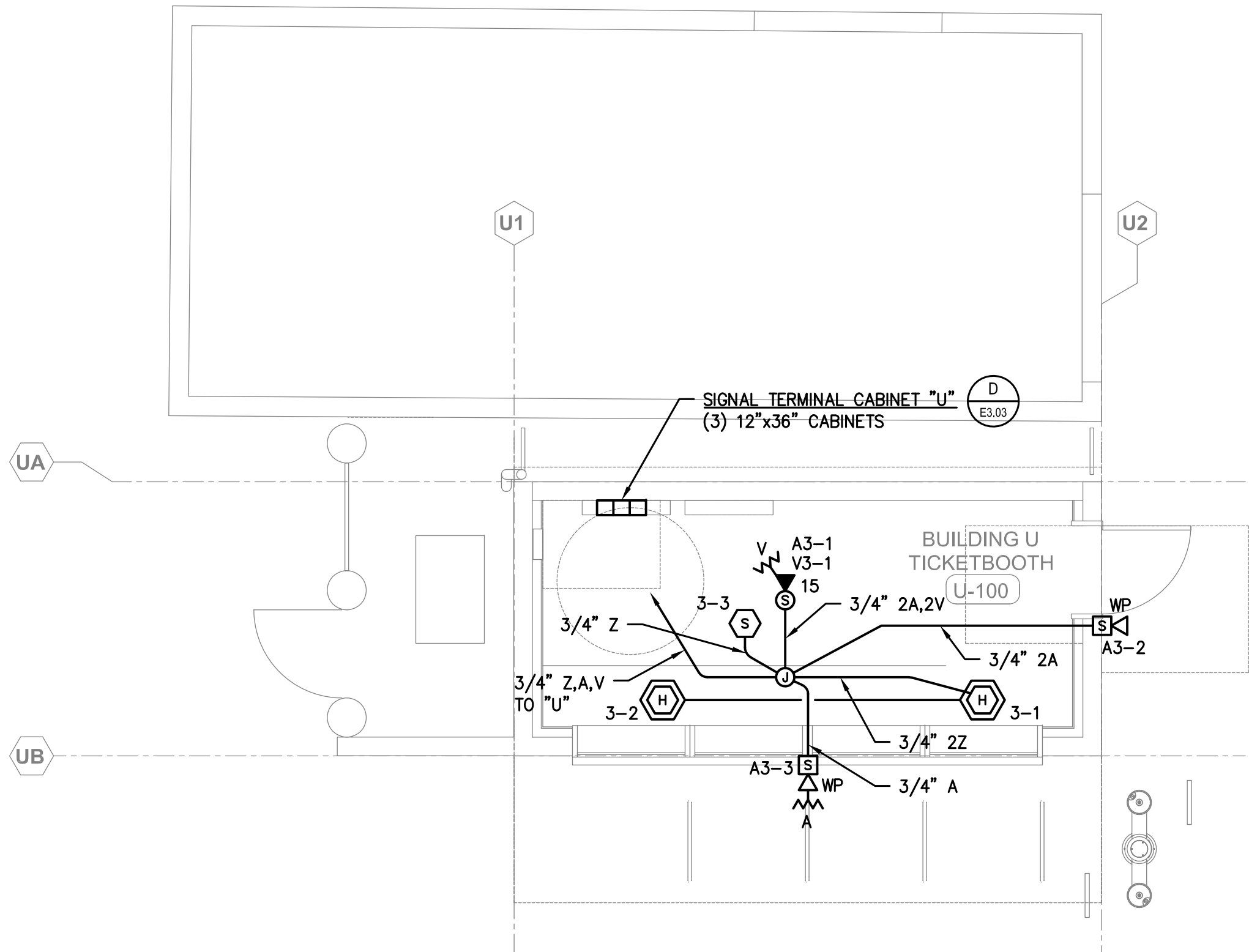
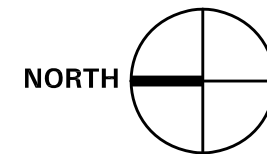
KEY NOTES - THIS SHEET ONLY

- 1 REFER TO MECHANICAL CONTROL DIAGRAMS (M0.03 & M0.04) FOR CABLE/CONDUCTOR REQUIREMENTS.
- 2 COORDINATE CABLE INSTALLATION WITH CONTROLS CONTRACTOR. CABLE SHALL BE INSTALLED BACK TO THE "LDF-V" IN THE HOME FIELD HOUSE (BLDG. "V").
- 3 TO SIGNAL TERM. CABINET "U". CONNECT TO NEW "ALC" CONTROLS. COORDINATE CABLE/CONDUCTORS REQUIRED WITH CONTROL CONTRACTOR.



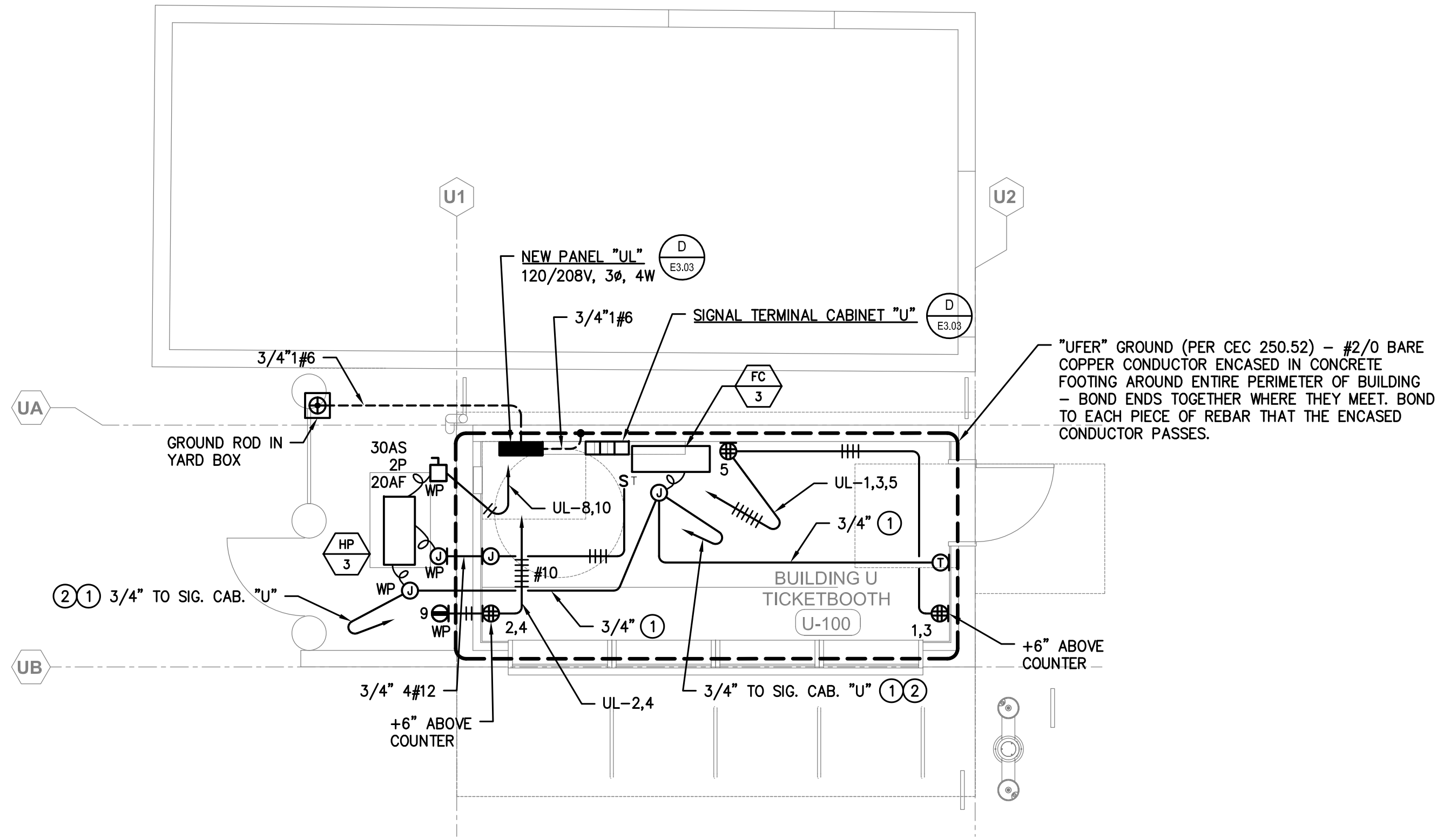
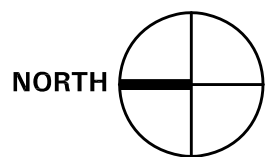
TICKET BOOTH FLOOR PLAN - LIGHTING

SCALE: 1/4" = 1'-0"



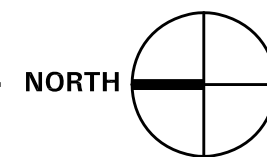
TICKET BOOTH FLOOR PLAN - FIRE ALARM

SCALE: 1/4" = 1'-0"



TICKET BOOTH FLOOR PLAN - POWER

SCALE: 1/4" = 1'-0"



REVISIONS



1909B.MOD
TURPIN & RATTAN
ENGINEERING, INC.
CONSULTING ENGINEERS
10000 DEER CREEK BLVD., SUITE 200
MONTROSE, CA 91328-1855
818 / 249 / 0444 FAX 249 / 1467

NORWALK LA MIRADA UNIFIED SCHOOL DISTRICT
LA MIRADA HIGH SCHOOL NEW FOOTBALL
STADIUM PROJECT
13520 ADELEFA DRIVE, LA MIRADA, CA 90638

DSA # 03-120551

NAC
ARCHITECTURE

NAC NO. 161-19015
DATE 12/10/2020

DSA BACKCHECK
SUBMISSION

FLOOR PLANS
BUILDING "U" -
ELECTRICAL

E8.01